

OVERVIEW

High security handicap grab bar.

FABRICATION

18 gauge stainless steel tubing with formed ends welded to 11 gauge stainless steel brackets to hold bar 1 1/2" from wall. Brackets have three holes for 1/4" screws to mount to wall or embeds. Attached closure plate has 1/4" drain holes.

MATERIAL

- 1 1/2" 18 gauge stainless steel tubing.
- 3" 11 gauge stainless steel brackets.
- 12 gauge stainless steel closure plate.

FINISH

#4 brushed finish.

WEIGHT

TBD

OPTIONS

- Sizes: 18", 24", 30", 42" & 48".

ASSEMBLY

No assembly required.

INSTALLATION

Mount to wall with screws or embeds.*

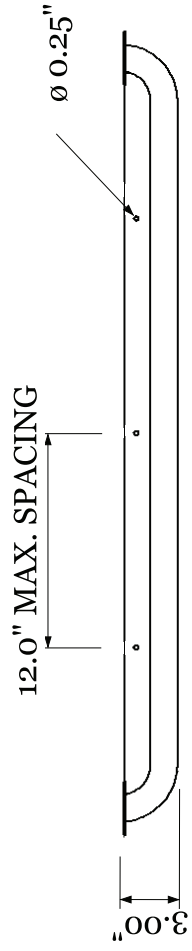
WARRANTY

1 year limited replacement warranty.

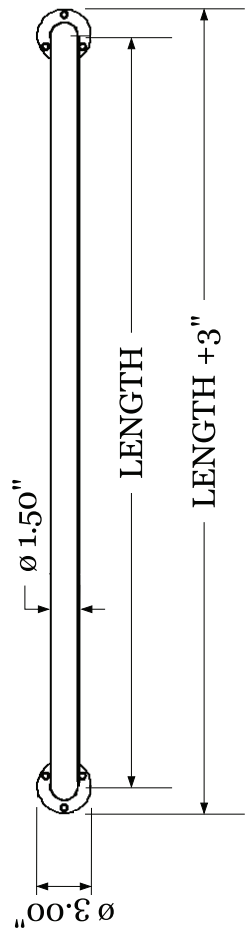
MAINTENANCE

Easy clean up with a damp cloth and mild detergent.

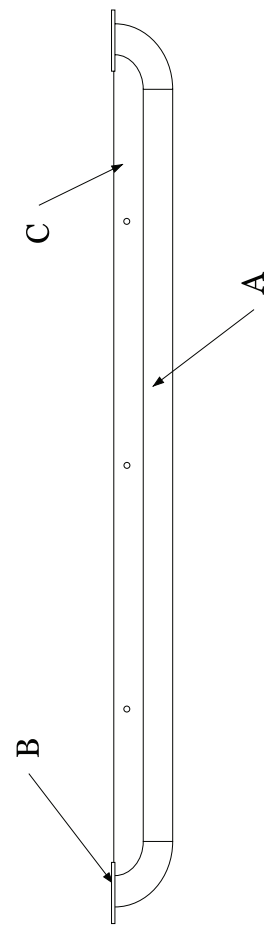
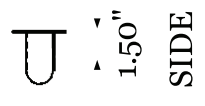
*Floor and wall mounting hardware not included.



TOP



FRONT



| ITEM | DESCRIPTION | QTY |
|------|--|-----|
| A | BAR, 1.5" D. STAINLESS STEEL TUBING, 18 G. #4 BRUSHED FINISH | 1 |
| B | BRACKETS, STAINLESS STEEL, 11 G. #4 BRUSHED FINISH | 2 |
| C | CLOSURE PLATE, STAINLESS STEEL, 12 G. #4 BRUSHED FINISH | 1 |

STANDARD TOLERANCES
 .X = ±.12" .XX = ±.06" .XXX = ±.03" ANGLE = ± 1°

DERBY
INDUSTRIES

Security Grab Bar
GB-600

| REVISIONS | |
|-----------|---------|
| MM/DD/YY | REMARKS |
| 1 | ... |
| 2 | ... |
| 3 | ... |
| 4 | ... |
| 5 | ... |